

10/100Base-TX to 100Base-FX media converter

**FIB1-10/100F, FIB2-10/100F
FRM301-10/100F**

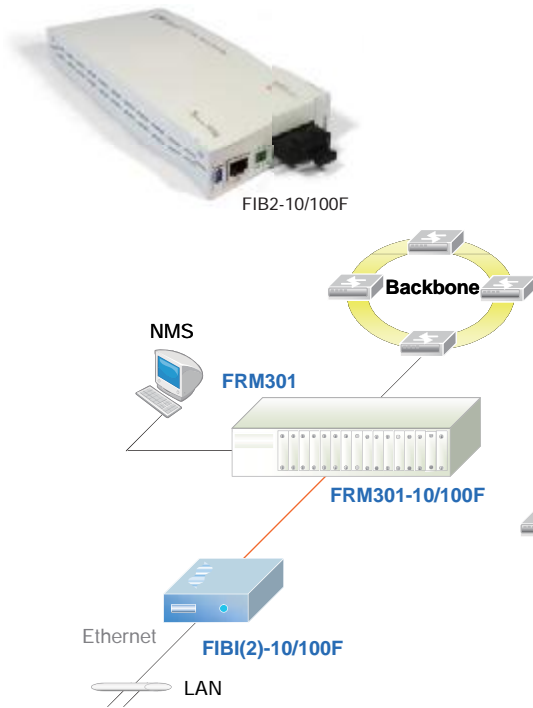
The FRM301-10/100F, FIB1-10/100F, FIB2-10/100F are Fast Ethernet 10/100Base-TX to 100Base-FX manageable (when installed in FRM301 with management) or stand-alone media converters, which give you the options to choose from the most popular fiber cabling connectors, ST, SC, or FC. Both multi-mode and single mode converter models are available as well as BiDi which allows bi-directional transmissions using only a single fiber cable. When auto-negotiation is selected, these units will automatically tailor themselves to convert both half-duplex and full-duplex signals, depending on your specific network needs. LED indicators signal the power status of the converter, UTP port speed, Link, and duplex status, FX port Link and duplex status.

Features

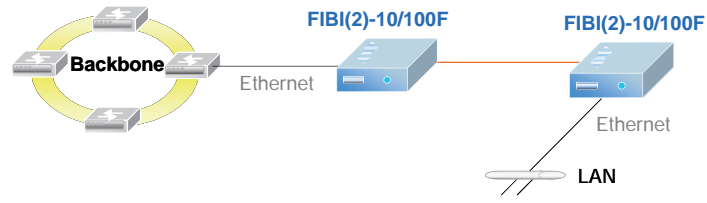
- 10/100Base-TX to 100Base-FX Converter
- Auto-Negotiation or forced mode
- Auto MDI/MDIX
- Forward 1600 bytes (Max.) packets
- Supports Q in Q double tagged frame transparent
- Supports IEEE 802.1q Tag VLAN pass thru
- Supports local monitor and configure by the SNMP manager.
- Support flow control (Pause)
- Supports Link Fault Pass through (LFP)
- Supports Loop Back Test
- Auto Laser Shutdown (ALS)



Optical Interface	Connector	1x9 (SC, ST, FC) or SFP LC
	Data rate	100Mbps
	Duplex mode	Full duplex
	Fiber	MM 50/125µm, 62.5/125µm, SM 9/125µm
	Distance	MM 2km, SM 15/30/50/80/120km, WDM 20/40/60/80km
	Wavelength	MM 1310nm, SM 1310,1550nm WDM 1310Tx/1550Rx (type A) 1550Tx/1310Rx (type B)
Electrical Interface	Connector	RJ45
	Data rate	10Mbps, 100Mbps
	Duplex mode	Half / Full duplex
	Cable	10Base-T Cat.3, 4, 5, UTP, 100Base-TX Cat.5, 5e or higher
Standard		IEEE 802.3, IEEE 802.3u
Indications		LED (Power, FX Link, FX Duplex, TX SPD, TX Link, TX Duplex)
Power Input	Card	: 12VDC
	Standalone	: AC, DC options
Power Consumption		< 4W
Dimension		FRM301/FIB1: 123 x 86 x 20mm (D x W x H) FIB2: 192 x 86 x 30mm (D x W x H)
Weight		FRM301: 290g, FIB1: 340g, FIB2: 550g
Temperature		0 ~ 50°C (Operating), -10 ~ 70°C (Storage)
Humidity		10 ~ 90% non-condensing
Certification		CE, FCC, RoHS
MTBF		65,000 hrs (25°C)



Fast Ethernet Media Converter



Ordering Information

FRM301-	<input type="checkbox"/>	<input type="checkbox"/>	<input type="checkbox"/>	<input type="checkbox"/>	Model type
FIB1-	<input type="checkbox"/>	<input type="checkbox"/>	<input type="checkbox"/>	<input type="checkbox"/>	
FIB2-	<input type="checkbox"/>	<input type="checkbox"/>	<input type="checkbox"/>	<input type="checkbox"/>	

10/100F

Example: FRM301-10/100F